



OMEGA

25 TON PICK 'N' CARRY
HYDRAULIC MOBILE
CRANE



→ **OMEGA** *the unbeatable*

"LOAD KING - FUEL SAVER"



Front and Rear chassis joining
Arrangement for achieving 40 deg. articulation on either side using heavy duty bearing for easy maneuverability and longer life.



Parking brakes
Pneumatically assisted fail safe brakes.



Load Indicator
Safe load indicator with hydraulic cutoff (optional)



Hydraulic Clutch
Hy. clutch for smooth gear shifting



Winch
Heavy duty hoist winch



Tool box
Spacious tool box for storage of tools and slings etc.



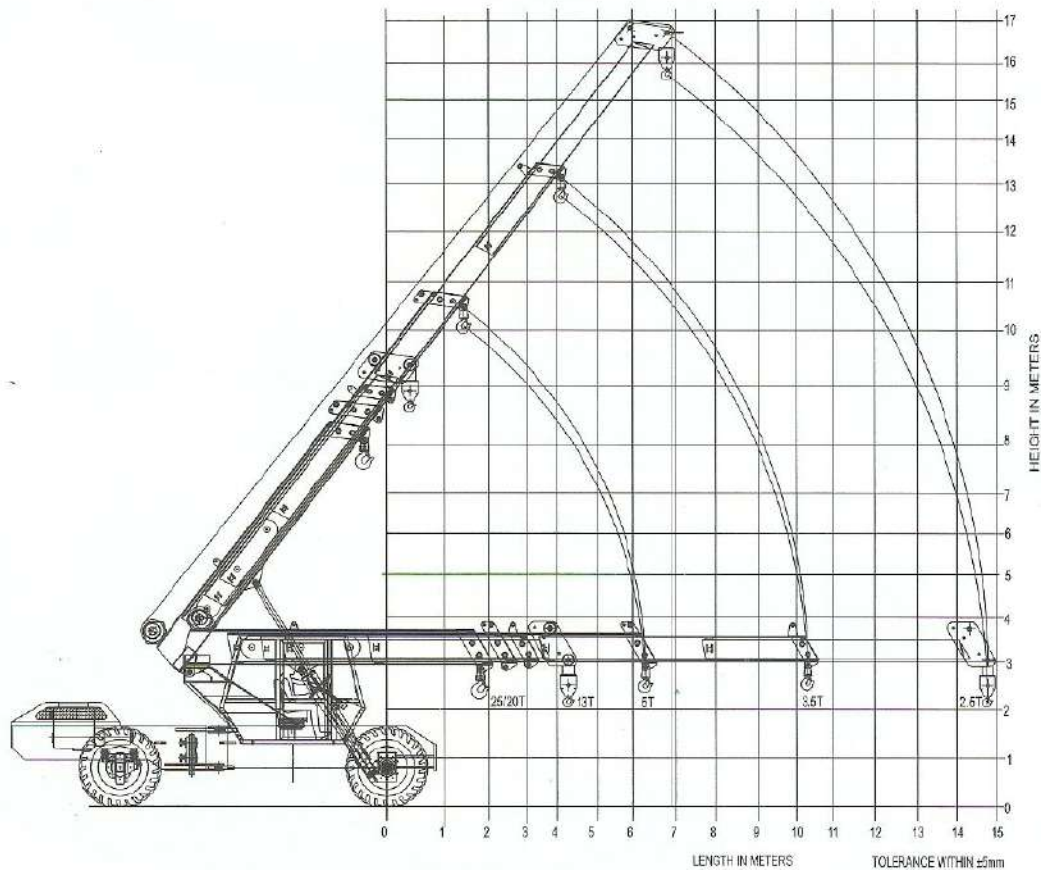
Stabilizers
A special feature for maintaining stability while lifting load at maximum height



High capacity Tanks
Good looking hydraulic & fuel tanks with high capacity for increased working hours.



Gear Shift
Gear shift through cables providing smooth gear shifting.



Technical Specifications

RATED CAPACITY

25 tonne at 2.00 m radius (Blocked)
Max hook height 17 m
Max. hook reach 16 m

HYDRAULIC SYSTEM

Main pump of 25 gallon. Control Valve- 4 spool double acting with a built in relief valve.

VEHICLE PERFORMANCE

Speed max 40 kmph
Gradeability 40% unladen

ENGINE

Diesel engine of Eicher make,
Ashok Leyland make

STEERING

Fully powered steering unit with twin hydraulic double acting rams
40° articulation on either side

AXLE LOADING

Front Axle 7200 kg
Rear Axle 12100 kg
Total 19300 kg

CLUTCH

310 mm Dia, Single, dry type
friction clutch plate.

ELECTRICAL SYSTEM

Battery - 12 V - 88 AH

STANDARD ACCESSORIES

All weather spacious cabin .
Inbuilt tool box.
Two hydraulically operated stabilizers in front.
Over hoist cut off system .
Battery cut off system .
Hydraulic cut off valve

TRANSMISSION

5 forward - 1 reverse synchromesh gearbox
& heavy duty Auxiliary gearbox

BOOM

Hydraulically powered telescopic 4 part Boom with twin extension cylinders.

OPTIONAL ACCESSORIES

Fly jib .
Additional Air conditioned cabin
SLI (Safety load indicator)

BRAKES

Service: full air dual line 'S' cam roller follower type

HOIST

Hydraulically operated with 4 falls/ 6 falls
Built in safety brakes.
Rope Dia 14 mm.

TANK CAPACITIES

Fuel tank 150 ltrs.
Hydraulic tank 170 ltrs.

Re-defining
the ultimate
power

PARKING

Graduated hand control valve system
(at rear wheels only)

DIMENSIONS

Overall length 9.80 m
Overall width 2.45 m
Overall height 3.10

AXLES

Front.. rigidly mounted on chassis
Rear. mounted with cradle

WHEEL TRACK

Front 2060 mm
Rear 1820 mm

TYRES

Front - 4 nos. 12 x 20 - 18PR
Rear - 4 nos. 12 x 20 - 18PR

WHEEL BASE

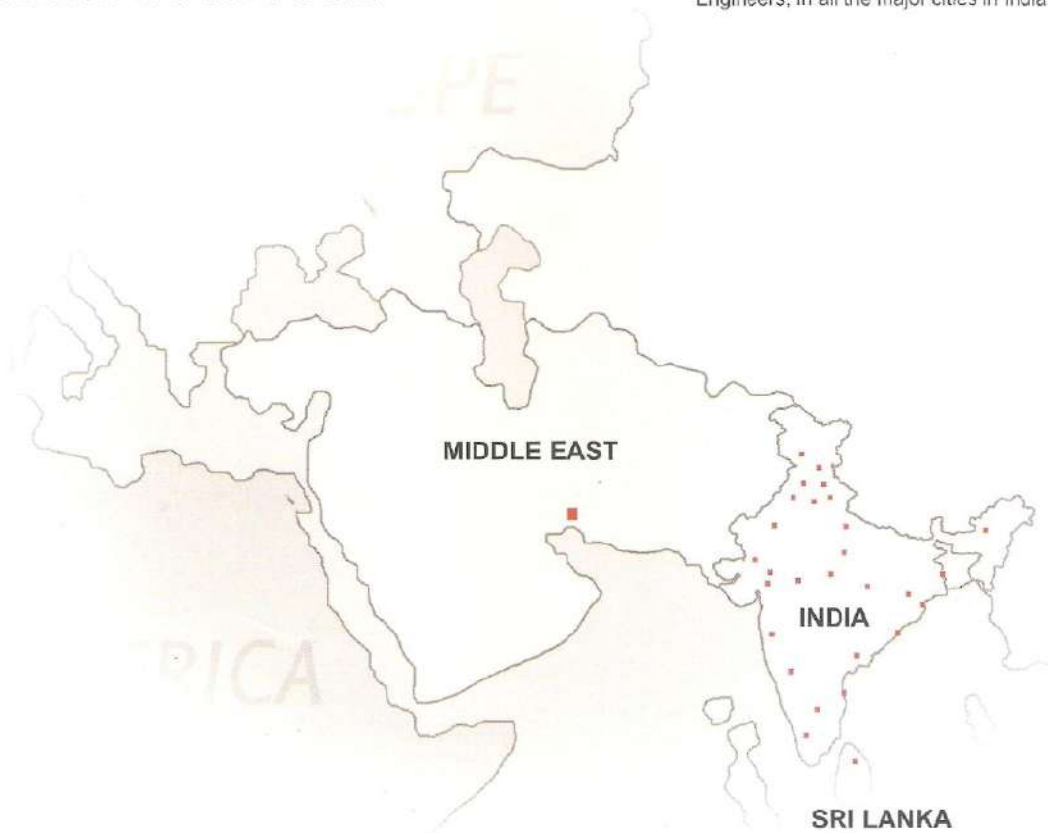
4450 mm



Dealer Network in India & abroad

PRODUCT SUPPORT

Omega Construction Equipment has Countrywide infrastructure for service & spare parts, through highly dedicated and committed Engineers, In all the major cities in India.



INDIA : JAMMU, MANDI, CHANDIGARH, LUDHIANA, JAIPUR, DELHI, FARIDABAD, JODHPUR, LUCKNOW, GUWAHATI, SINGRAULI, AHMEDABAD, BARODA, JABALPUR, SURAT, INDORE, BHILWARA, CUTTACK, BHUBANESHWAR, MUMBAI, VIZAG, PUNE, SECUNDERABAD, CHENNAI, BANGALORE, COCHIN **OVERSEAS** : UAE, SRILANKA



OMEGA CONSTRUCTION EQUIPMENT PVT. LTD.

Plot No. 262-L, Sector -24, Faridabad - 121005 INDIA
Ph : 91-129-4296800 Fax : 91-129-4066707
E-mail : mohit@omega.org.in
Web : www.omega.org.in

Dealer