



OMEGA

14 Tonnes Pick 'N' Carry Hydraulic Mobile Crane

Re-defining
the ultimate
power



OMEGA *the unbeatable*

"LOAD KING - FUEL SAVER"

we are d

After stringent research, keeping the practical needs in mind, we are introducing some special features which differs from others.



Maximum turning radius for manoeuvrability



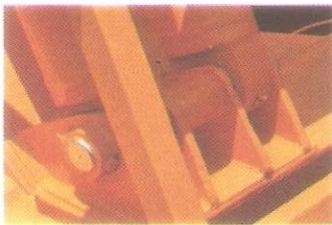
Inbuilt mechanical operated 4th ext



Inbuilt over extension operation warning system



Re-enforced robust goose neck for heavy application



Rigid and robust lift cylinder mounting on front axle



Robust & heavy duty lock valve for ultimate safety of lifting operation



New look counter weight for better stability



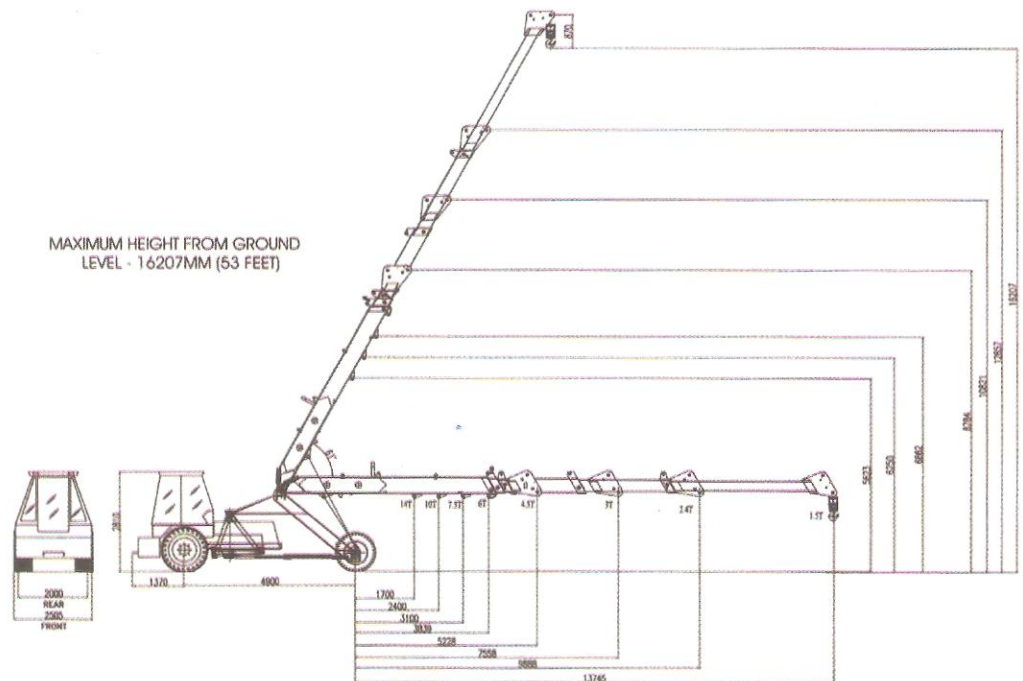
Operator friendly gear lever operation



Re-enforced heavy bumper with an aesthetic look



Over hoist warning system



ifferent !

MEGA PC 14000

Main Frame

Heavy duty all welded rigid construction box-type with bent section having less weld joints, gives higher structural strength.

Boom

Two section box type telescopic boom made of two U sections welded together close to neutral axis.

Hydraulic System

Main pump of intra-vane type driven from engine crankshaft pulley through propeller shaft.
Control Valve :4 spool double acting with built in relief valve. Hydraulic Filter - 25 μ on return line.

Boom Derricking

Two double acting jacks designed for sustaining all operating and shock loads.

Steering

Articulated steering through double acting hydraulic jacks of 880 mm stroke.

Boom Telescope

Two part / Three part / Four part boom with hydraulically operated extension jack

Hoist Mechanism

Driven by hydraulic motor employing 4 falls of 13 mm dia wire rope. Line speed 24m per minute.

Engine

Mahindra 4-cylinder @2100 rpm
inline water cooled, diesel engine .

Transmission

Heavy duty sliding mesh with 8 forward and 2 reverse speeds with high and low range selector with original gearbox fitted.

Clutch

11" single, dry motion heavy duty clutch plate

Brake

Service brake-pneumatically assisted hydraulic brake on Front wheel , mechanical disc brake actuated through hydraulic slave cylinders on rear Wheels.
Parking Brake - Hand operated Parking Brake on Rear wheels.

Wheels

Front Tyre - 11.00 x 20 - 16 PR - 4 nos.
Rear Tyre -- 13:00 x 24 - 14 PR - 2 nos.

Top Speed

Max.32Kmph unladen on even metalled road

Total Gross weight - 11200kgs

Track Dimension

Front - 2505mm

Rear - 2000mm

Electrical System

Battery 12Volt 100Ah

Alternator 12Volt 36Amp.

Re-fill Capacities

Air Cleaner - 0.75 litres

Engine Oil - 7.5 litres

Fuel Tank - 60 litres

Hydraulic Oil Reservoir - 100 litres

Transmission oil - 48 litres

Operation Timing

Steering - 9 sec.(Lock to Lock)

Derricking in - 17 sec.

Derricking out - 20 sec.

Telescoping in-out - 10 to 12 sec.

Safety Features

Overload audio warning

Over hoist audio warning

Hose failure protection lock valve

Safety brake on hoist

Jack safety guard -heavy duty

Rugged Bumper - heavy duty

Standard Accessories

All weather wide view cabin

Tool Box fabricated on A Frame

Front and rear Work Light

Reflectors

Tool Kit

Seats for slingers in the Cabin

Optional Accessories

Fly jib

Spare wheel assembly

Spark arrestor

Extra hook

The information in this brochure is intended to be of general nature only. we reserve the right to change the specifications without notice. illustration may include optional equipment. All weight and dimensions are within $\pm 10\%$



PRODUCT SUPPORT

Omega construction equipment is one of the most reputed engineering organization of India. Over the years, Omega has developed a strong and dedicated dealer network across the country supported by experienced service engineers. Omega through innovative products of quality, comfort and performance is trying to create a better platform in the construction engineering.

Dealer Network in India & Abroad



INDIA : JAMMU, MANDI, CHANDIGARH, LUDHIANA, JAIPUR, DELHI, FARIDABAD, JODHPUR, LUCKNOW, BHOPAL, GUWAHATI, SINGRAULI, AHMEDABAD, BHAVNAGAR, BARODA, JABALPUR, SURAT, INDORE, BHILWARA, CUTTACK, KOLKATA, ASSAM, ORISSA, BHUBANESHWAR, MUMBAI, VIZAG, PUNE, SECUNDERABAD, CHENNAI, BANGALORE, COCHIN

OVERSEAS : UAE, SRILANKA, BANGLADESH

OMEGA CONSTRUCTION EQUIPMENT PVT. LTD.

Plot No: 262-M, Sector -24, Faridabad - 121005, INDIA

Ph. 91-129-4296800, Fax.: 91-129-4066707

E-mail.: info@omega.org.in, Web.: www.omega.org.in

Dealer

