



MEGA

16 Ton Pick 'N' Carry

New Generation Hydraulic Mobile Crane

4X4 WD



Re-defining
the ultimate
POWER

ISO : 9001:2015



MEGA *The Unbeatable*

LOAD KING, FUEL SAVER

Technical Specification

⚙️ RATED CAPACITY

16 ton at 1.7 - 2 m radius (Blocked)
Max. hook height 16 m
Max. hook reach 15 m

⚙️ HYDRAULIC SYSTEM

Main pump of 17 gallon. Control Valve-5 Spool double acting with a built in relief valve.

⚙️ VEHICLE PERFORMANCE

Speed max 30- 40 kmph
Gradeability 40% unladen

⚙️ ENGINE

Diesel engine water cooled four cylinder
Eicher/Ashok Leyland make.
Turbo charged, 101 BHP. @ 2100 - 2400 rpm

⚙️ STEERING

Fully powered steering unit with twin hydraulic double acting arms
40° articulation on either side & Turning radius upto 7.5 mtr. on outer rear wheels.

⚙️ AXLE LOADING

Front Axle	6500 kg
Rear Axle	9500 kg
Total	16000 kg

⚙️ CLUTCH

310 mm Dia, Single, Dry Type friction clutch plate.

⚙️ ELECTRICAL SYSTEM

Battery - 12/24 V, Negative earth.

⚙️ STANDARD ACCESSORIES

All weather spacious cabin.
Inbuilt tool box.
Two hydraulically operated stabilizer in front.
Front & rear work light
Reflectors & rear view mirror
Cabin fan
Viper motor
All gauges : water temp., engine oil pressure, RPM cum hour Meter
Front Tyre Protector
4x4 Wheel drive

⚙️ TRANSMISSION

Heavy duty synchromesh with 10 forward - 2 reverse speed with high & low Range Selector,

⚙️ HYDRAULIC BOOM

Hydraulically powered telescopic two to four part Hydraulically operated & synchronized & 4th part power extended with twin extension cylinders
Derricking through two nos. Cylinders.

⚙️ OPTIONAL ACCESSORIES

Fly jib.
Additional Air condition cabin
SLI (Safety load indicator) Hydraulic Cut off
Spark arrester
Fire extinguisher
Front outriggers
Helper/slinger seat
Drag winch

⚙️ BRAKES

Service : front & rear air operated brake
Full air dual line 'S' cam roller follower type parking air brake actuated at rear wheel

⚙️ HOIST

Winch is driven by hydraulic motor employing 04/06 falls of 13 mm. dia rope suitable arrangement (should be given so that move up/down) when boom retract or extended.

⚙️ TANK CAPACITIES

Fuel tank 120 ltrs.
Hydraulic tank 140 ltrs.

⚙️ PARKING

Graduated hand control valve system (at rear wheels only)

⚙️ DIMENSIONS

Overall length	10.50 mtr.
Overall width	2.45 mtr.
Overall height	3.10 mtr.

⚙️ AXLES

Front : rigidly mounted on chassis
Rear : mounted with leaf springs

⚙️ WHEEL TACK

Front	1820 mm
Rear	1820 mm

⚙️ TYRES

Front - 4 nos. 11.00 x20 - 16 PR
Rear - 4 nos. 11.00 x20 - 16 PR

⚙️ WHEEL BASE

4450 MM





Power Steering
With double acting arms
40° articulation on either side



Driver Seat
Comfortable & adjustable
Operator seat



Powerful Boom
Hydraulically powered boom
with twin extension cylinders



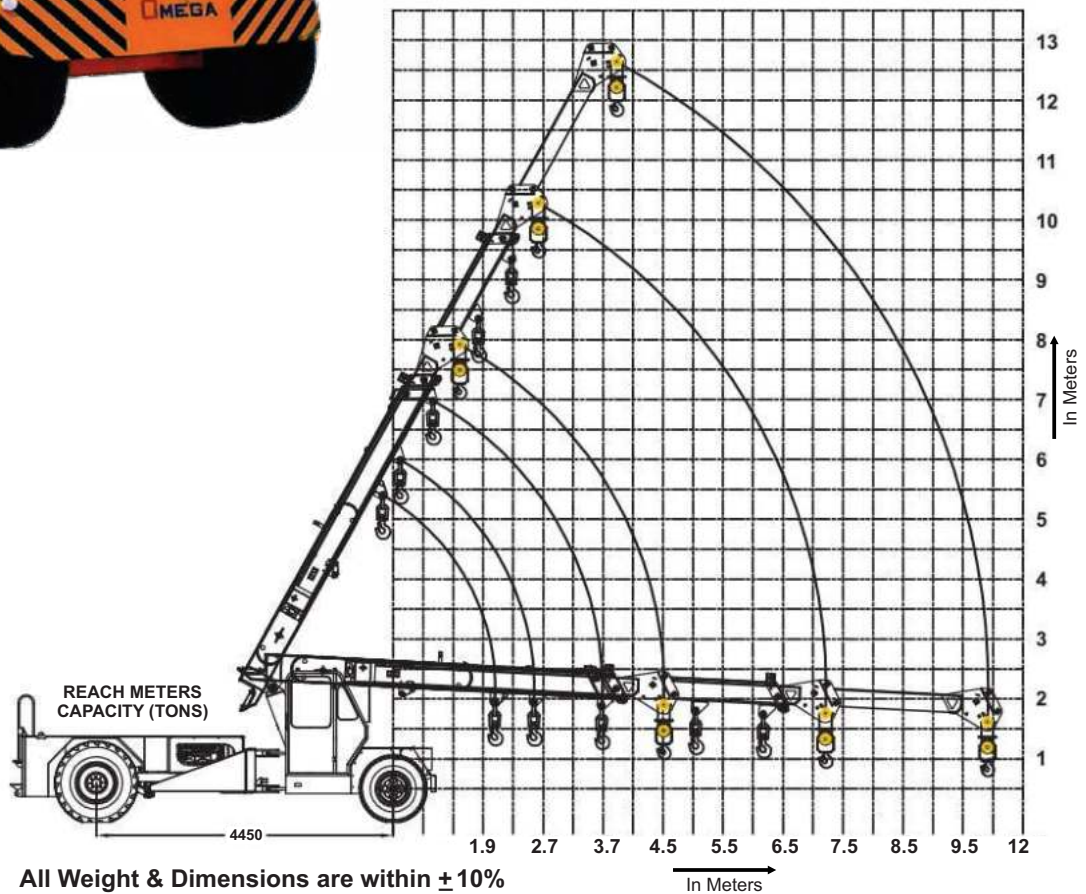
Slinger Seat
Comfortable & Sliding
Helper Seat



Front Cabin
Front mounted ergonomically
designed for better visibility



Stabilizers
A Special Feature for maintaining
stability while lifting load at
maximum height



All Weight & Dimensions are within $\pm 10\%$



PC-16000

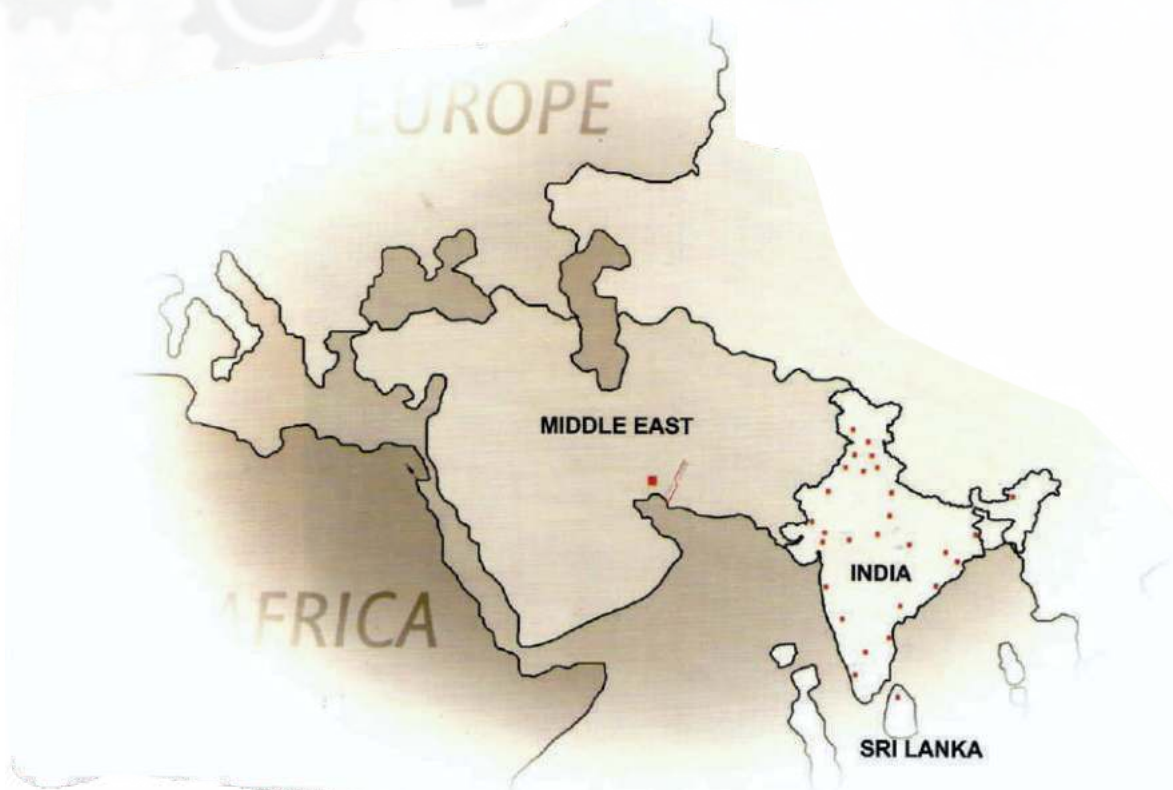


OMEGA *The Unbeatable*





Dealer Network in India & Abroad



INDIA : JAMMU, MANDI, CHANDIGARH, LUDHIANA, JAIPUR, DELHI, FARIDABAD
 JODHPUR, LUCKNOW, GUWAHATI, SINGRAULI, AHMEDABAD, BARODA, JABALPUR
 SURAT, INDORE, BHILWARA, CUTTAK, BHUBANESHWAR, MUMBAI, VIZAG, PUNE
 SECUNDERABAD, CHENNAI, BANGALORE, COCHIN **OVERSEAS :** UAE, SRILANKA

Product Support

Omega Construction Equipment has countrywide infrastructure for service & Spare parts, through highly dedicated and committed engineers, in all the major cities in india.

OMEGA CONSTRUCTION EQUIPMENT PVT. LTD.

Head Office : GF 18, Ozone center, Sec-12, Faridabad Haryana - 121001
Manufacturing Unit : Plot No. 139, Sec-24, Faridabad Haryana - 121005
Manufacturing Unit-2 : Khasra No. 44, Seekri Pyala Road, Sagarpur, Ballabgarh
 Distt. Faridabad Haryana - 121004
Land Line No. : +91-129-4066707 (30 Lines)
E-mail: info@omega.org.in
Web : www.omega.org.in

Dealer :

